

## CLAMPING FORCE CHART

ORDER NO.	SCALE				
	KN				
	4	3	2	1	0
VQC-125	-	40KN	28KN	16KN	8KN
VQC-160	60KN	46KN	32KN	18KN	10KN
VQC-160L	60KN	45KN	32KN	20KN	10KN
VQC-200L	60KN	45KN	32KN	20KN	10KN

### ADJUSTING METHOD

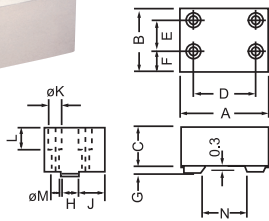
1. FIXED COLLAR
2. TURN BY WENCH TO GET NO. 0, 1, 2, 3, 4. TO HAVE CLAMPING FORCE

**OPTIONAL:** Soft jaw for different shape workpiece FJ & MJ can for cutting

FJ



Fixed side



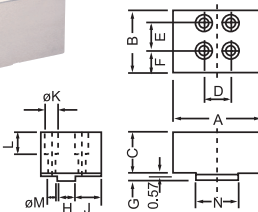
## FIXED JAW

ORDER NO.	A	B	C	D	E	F	G	H	J	K	L	M	N	CODE NO.
VQC-125FJ	124.5	91	60	88	45	29.5	8	24	40	19	33.5	13	63	4005-014
VQC-160FJ	159.5	102	60	124	50	34	9	28	45	22	30	15	84	4005-015
VQC-160L-FJ	159.5	102	60	124	50	34	9	28	45	22	30	15	84	4005-016
VQC-200L-FJ	200	122	75	140	62	40	9	28	57	25	37	17	100	4005-016A

MJ

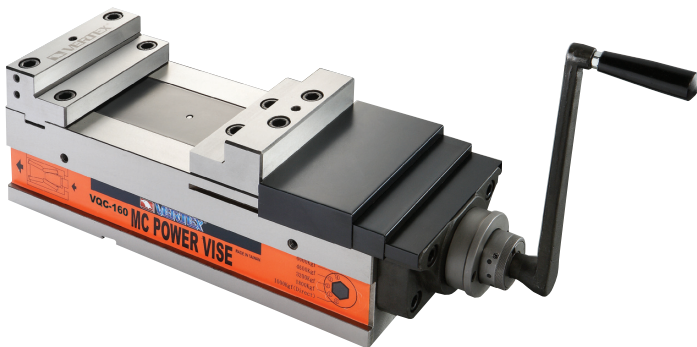


Movable side



## MOVEABLE JAW

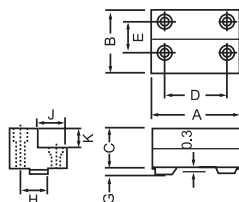
ORDER NO.	A	B	C	D	E	F	G	H	J	K	L	M	N	CODE NO.
VQC-125MJ	124.5	87	60	35	42	29	8	24	38	19	33.5	13	59.5	4005-017
VQC-160MJ	159.5	102	60	56	50	34	9	28	45	22	30	15	80.5	4005-018
VQC-160L-MJ	159.5	102	60	56	50	34	9	28	45	22	30	15	80.5	4005-019
VQC-200L-MJ	200	117	75	62	59	39	9	28	54.5	25	37	17	95	4005-019A



VICE JAWS CAN TURN 180° FOR YOUR REQUIREMENT.

**OPTIONAL:** Hard jaw for thin type workpiece

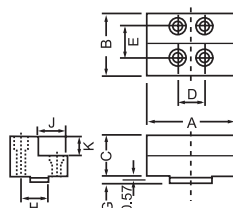
FJL



## L TYPE FIXED JAW

ORDER NO.	A	B	C	D	E	G	H	J	K	CODE NO.
VQC-125FJL	124.5	78	40	88	45	8	24	39	20	4005-008A
VQC-160FJL	159.5	86	50	124	50	9	28	43	25	4005-009
VQC-160L-FJL	159.5	86	50	124	50	9	28	43	25	4005-010
VQC-200L-FJL	200	102	70	140	62	9	28	51	35	4005-010A

MJL



## L TYPE MOVEABLE JAW

ORDER NO.	A	B	C	D	E	G	H	J	K	CODE NO.
VQC-125MJL	124.5	74	40	35	42	8	24	37	20	4005-011
VQC-160MJL	159.5	86	50	56	50	9	28	43	25	4005-012
VQC-160L-MJL	159.5	86	50	56	50	9	28	43	25	4005-013
VQC-200L-MJL	200	98	70	62	59	9	28	49	35	4005-013A